

# ASUS AiMESH SETUP GUIDE

## Step 1 Preparation

Before you start to setup ASUS AiMesh, you have to prepare:

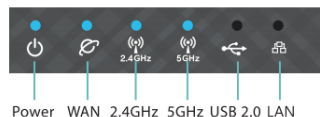
- ✓ Two (2) ASUS routers (models supporting AiMesh <https://www.asus.com/AiMesh/>).
- ✓ Assign one router as the **AiMesh router**, and another router as **AiMesh node**. Router with the highest specifications should be used as the AiMesh router.
- ✓ Locate AiMesh router and node within **1-3 meters** when setup process.



## Step 2 Firmware upgrade

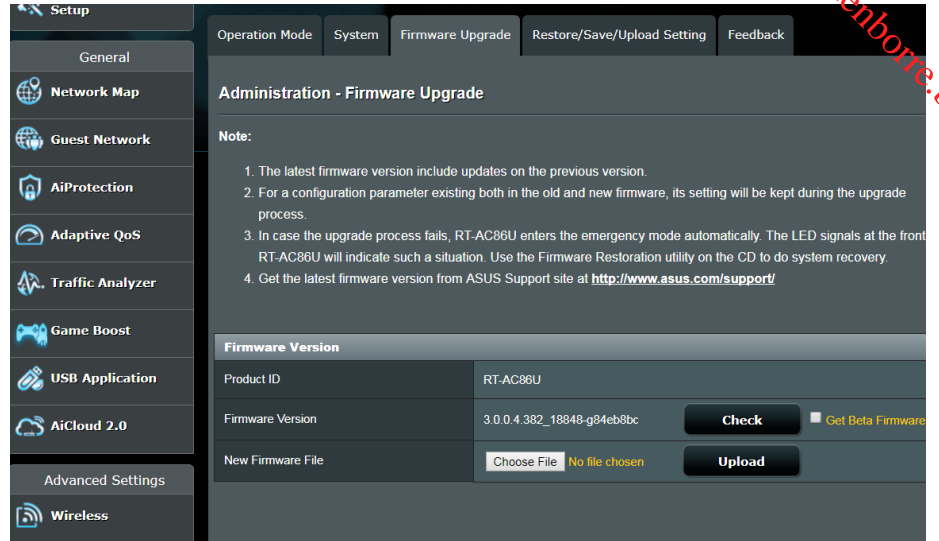
Upgrade all routers with AiMesh-supported firmware

1. Plug in the power adapter and press the power button at the back of your router.
2. Check the WAN and 2.4GHz / 5GHz LED lights to ensure the hardware connection is ready.

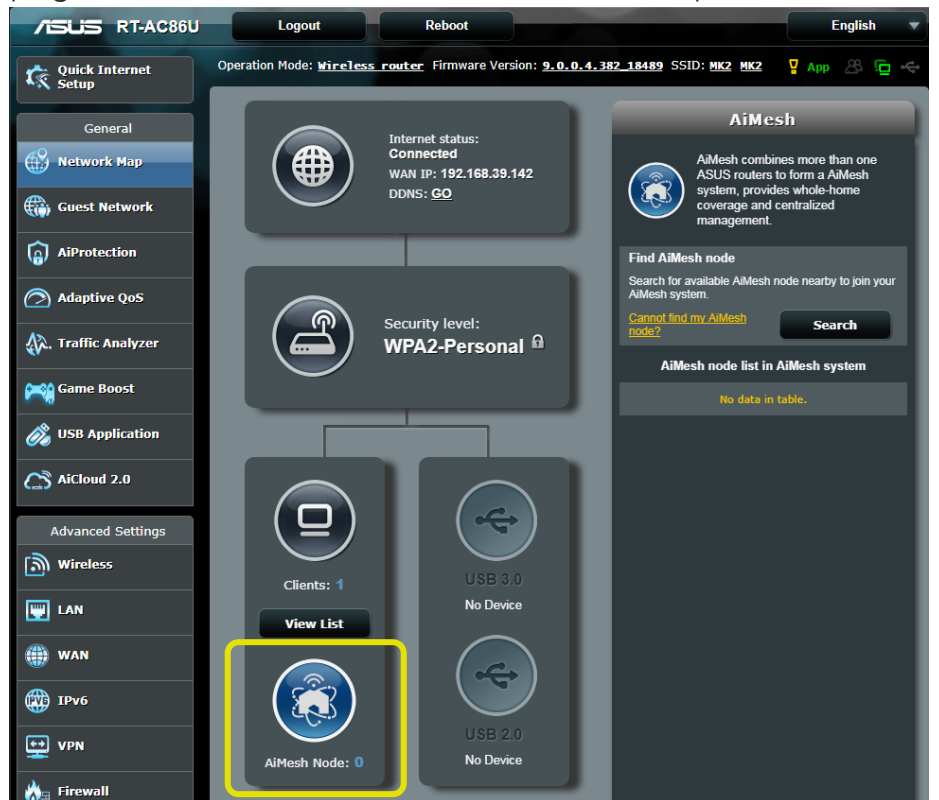


3. Connect your PC to the router via a network cable.

4. Launch a web browser. You will be redirected to the ASUS Setup Wizard. If not, navigate to <http://router.asus.com>.
5. Go to **Administration** → **Firmware Upgrade**. Click on **Check**, and it will upgrade firmware automatically.



6. After firmware update completed, please go to **Network Map** page to confirm whether AiMesh icon showed up.



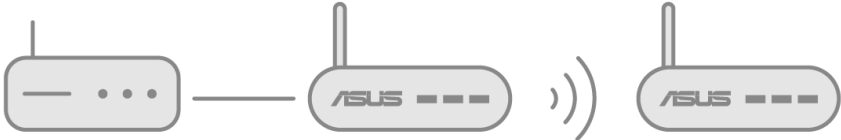
Step 3  
Restore AiMesh  
node

Reset **AiMesh node** to factory default

1. Press the reset button of **AiMesh node** at least 5 seconds and release the reset button until the power LED is flashing slowly.



2. When reset process completed, remove network cable, let **AiMesh node** keep power on and standby for AiMesh system setting.



- AiMesh node:**
1. Firmware upgrade
  2. Reset to default
  3. Remove network cable
  4. Keep power on
  5. Standby

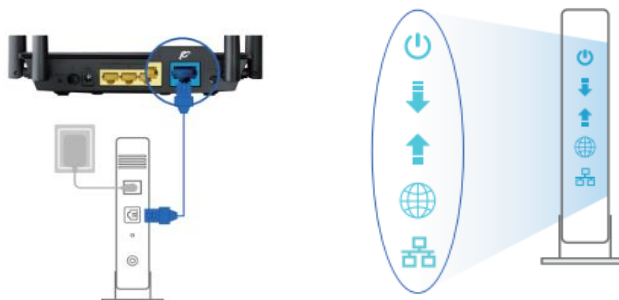
# Step 4 Setting up AiMesh router

## Setting up AiMesh router

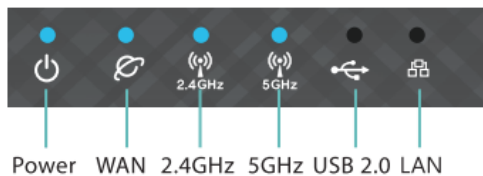
1. Unplug your cable/DSL modem. If it has a battery back up, remove the battery.



2. Connect your modem to the WAN port of **AiMesh router** with network cable. And then power on your modem. Check your modem LED lights to ensure the connection is active.



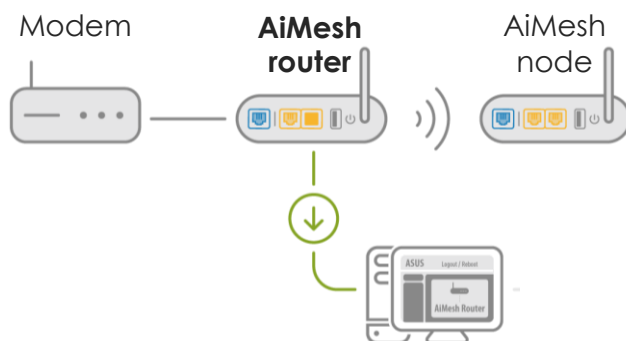
3. Plug in the power adapter and press the power button at the back of your router. Check the WAN and 2.4G / 5G LED lights to ensure the hardware connection is ready.



4. You can choose setting AiMesh on
  - a). **Web GUI**. Go to step [Option a.](#)
  - b). **ASUS Router APP-Android**. Go to step [Option b.](#)
  - c). **ASUS Router APP-iOS**. Go to step [Option c.](#)

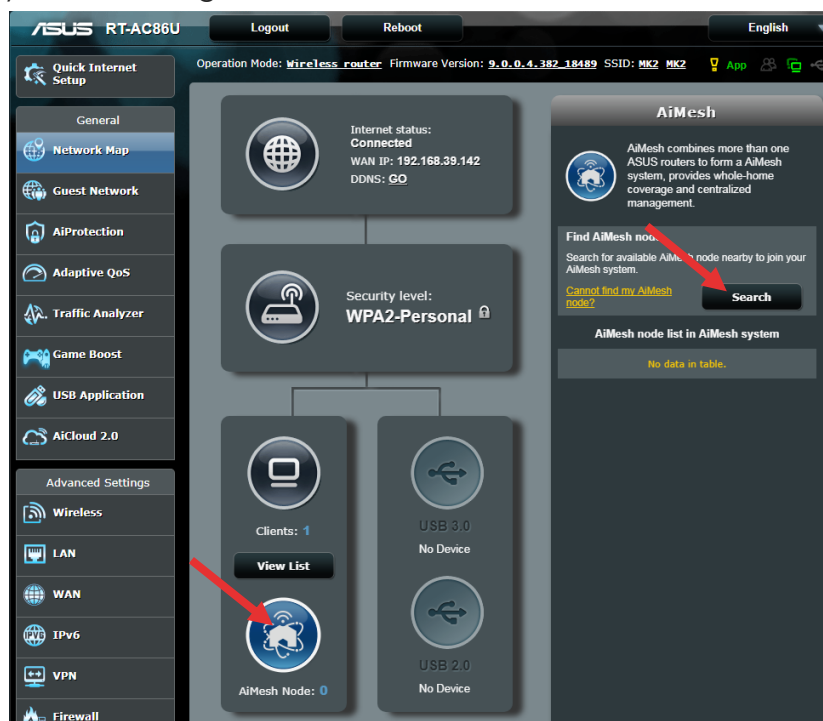
## Option a: Set up AiMesh on Web GUI

1. Connect your PC to **AiMesh router** with a network cable: turn off Wi-Fi on your PC, and then use an Ethernet cable to connect the one of LAN port of your **AiMesh router** and your PC.



\*\*If you want to use Wi-Fi to connect your PC and AiMesh router instead of network cable, on your PC, search the network name (SSID) of your AiMesh router and connect it. You can find the default network name (SSID) at the back label of your AiMesh router.

2. Launch a web browser. You will be redirected to the ASUS Setup Wizard. If not, navigate to <http://router.asus.com>.
3. Go to **Network Map** page, click **AiMesh icon** and then **Search** for your extending AiMesh node.

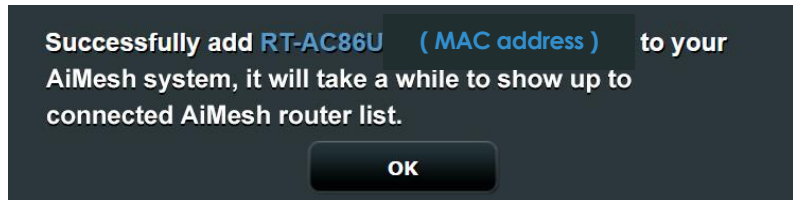


- 4. After click Search, it will search AiMesh node automatically. When AiMesh node shows on this page, click it to add it into AiMesh system. It is best to place all routers in close proximity when synchronizing for the first time in case of interference.



If it cannot find any AiMesh node nearby or synchronization fails, please check followings and try again.

- a). Move your AiMesh node closed to AiMesh router within **1-3 meters**.
  - b). Your AiMesh **node** is powered on.
  - c). Your AiMesh **node** is upgraded to AiMesh-supported firmware.
  - d). Your AiMesh **node** is reset to default.
- 5. A message is displayed when synchronization is completed.



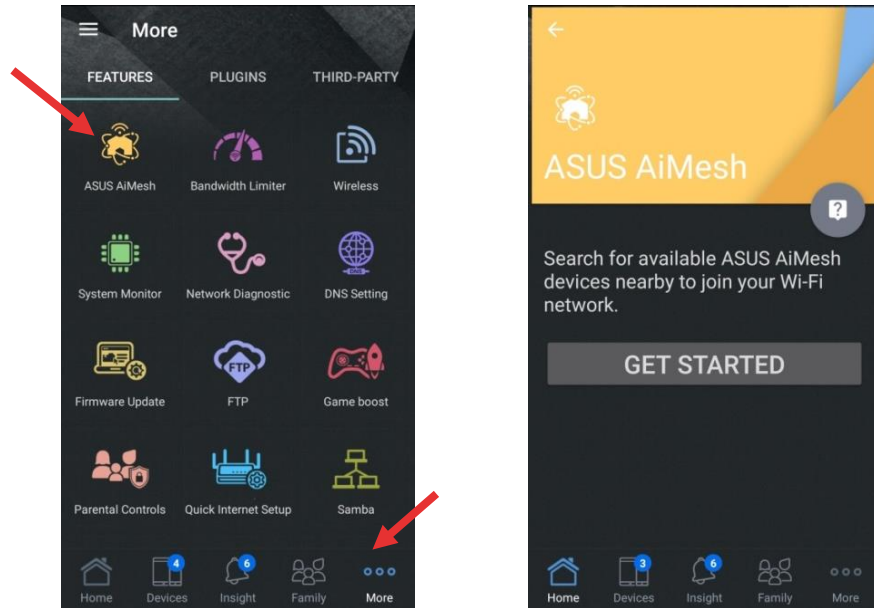
- 6. Congratulation! You can find below pages show up when AiMesh node has successfully added to AiMesh network.



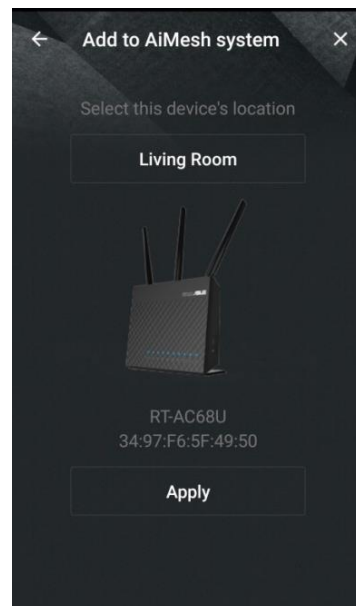
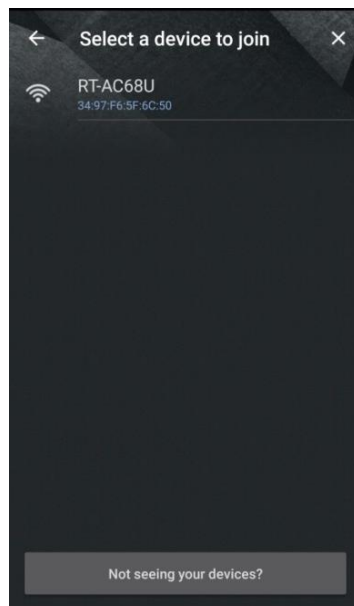
## Option b: Set up AiMesh on ASUS Router APP-Android



1. Download **ASUS Router APP** on [Google Play](#).
2. Search the network name (SSID) of your **AiMesh router**, and connect it. You can find the default network name (SSID) at the back label of your AiMesh router.
3. After login, go to **More → AiMesh**, and get started.

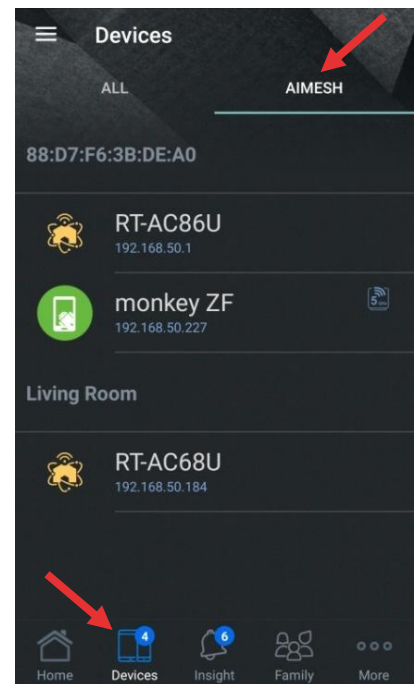
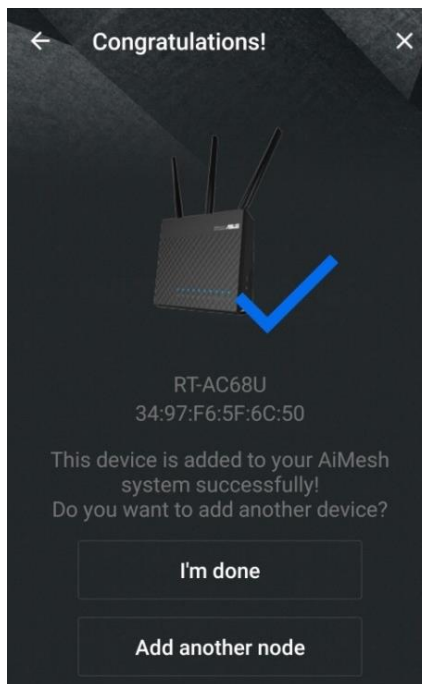


4. After click Get Started, it will search AiMesh node automatically. When AiMesh node shows on this page, click it to add it into AiMesh system. It is best to place all routers in close proximity when synchronizing for the first time in case of interference.



If it cannot find any AiMesh node nearby or synchronization fails, please check followings and try again.

- a). Move your AiMesh node closed to AiMesh router within **1-3 meters**.
  - b). Your AiMesh **node** is powered on.
  - c). Your AiMesh **node** is upgraded to AiMesh-supported firmware.
  - d). Your AiMesh **node** is reset to default.
5. A message is displayed when synchronization is completed.
6. Congratulation! You can find below pages show up when AiMesh node has successfully added to AiMesh network. Go to **Devices** → **AiMesh** for more information.

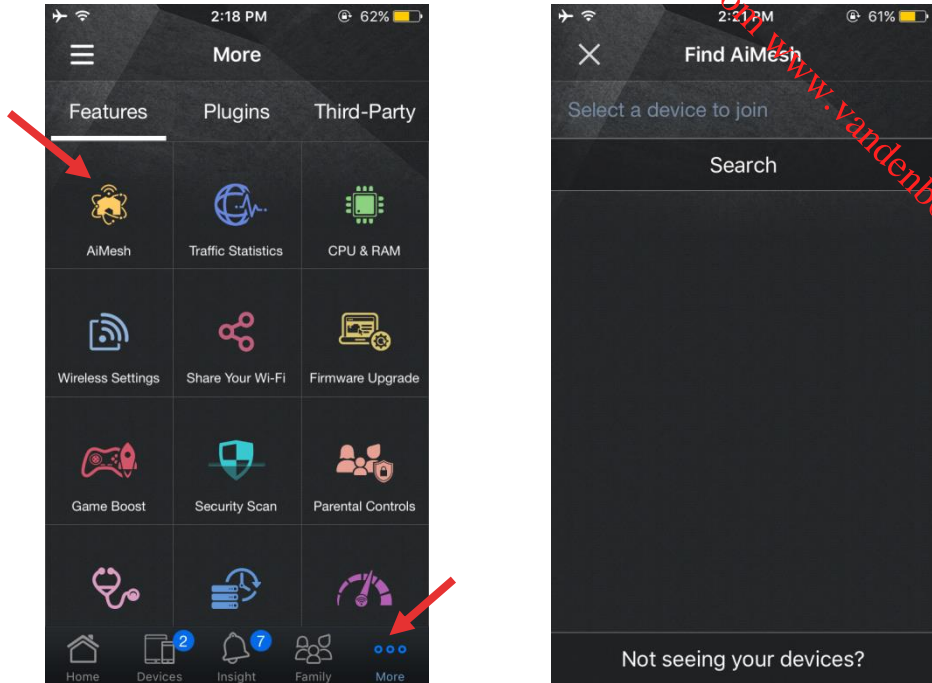


### Option c: Set up AiMesh on ASUS Router APP-iOS

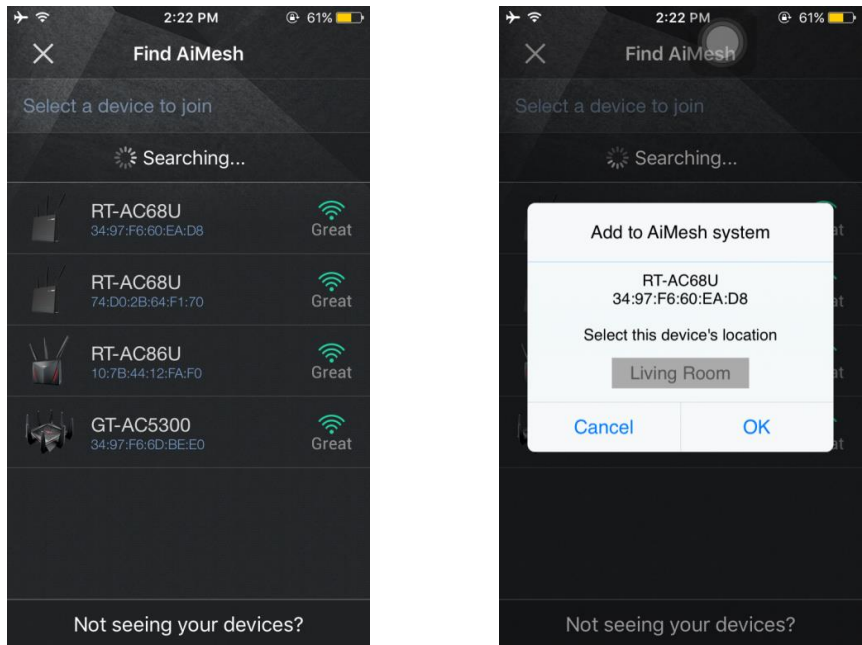


1. Download **ASUS Router APP** on [App Store](#).
2. Search the network name (SSID) of your **AiMesh router**, and connect it. You can find the default network name (SSID) at the back label of your AiMesh router.
3. After login, go to **More** → **AiMesh**, and get started.



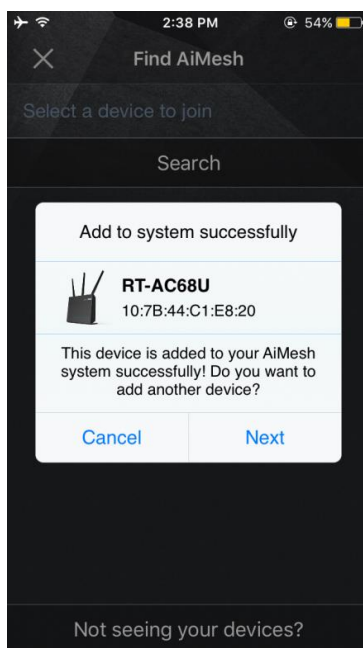


4. After click, it will search AiMesh node automatically. When AiMesh node shows on this page, click it to add it into AiMesh system. It is best to place all routers in close proximity when synchronizing for the first time in case of interference.



If it cannot find any AiMesh node nearby or synchronization fails, please check followings and try again.

- a). Move your AiMesh node closed to AiMesh router between **1-3 meters**.
  - b). Your AiMesh **node** is powered on.
  - c). Your AiMesh **node** is upgraded to AiMesh-supported beta firmware.
  - d). Your AiMesh **node** is reset to default.
5. A message is displayed when synchronization is completed.
6. Congratulations! You can find below pages show up when AiMesh node has successfully added to AiMesh network. Go to **Devices** → **AiMesh** for more information.

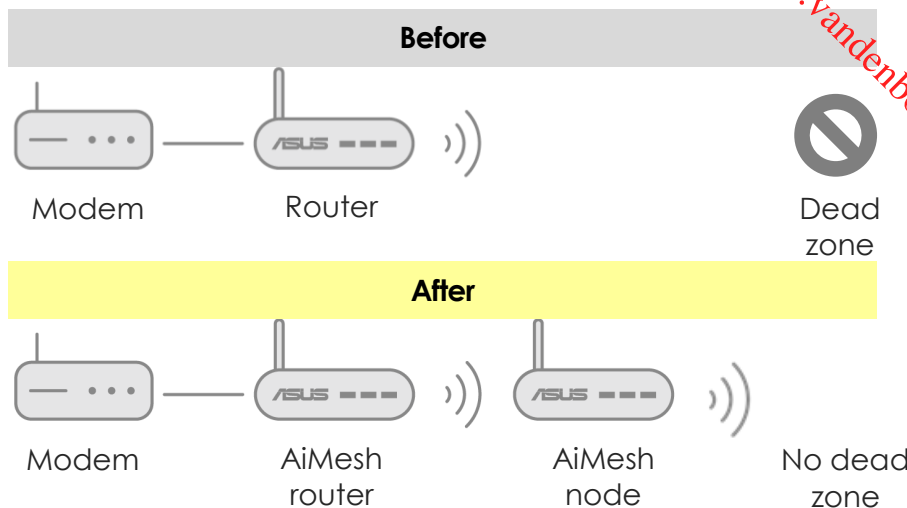


## Step 5 Placement

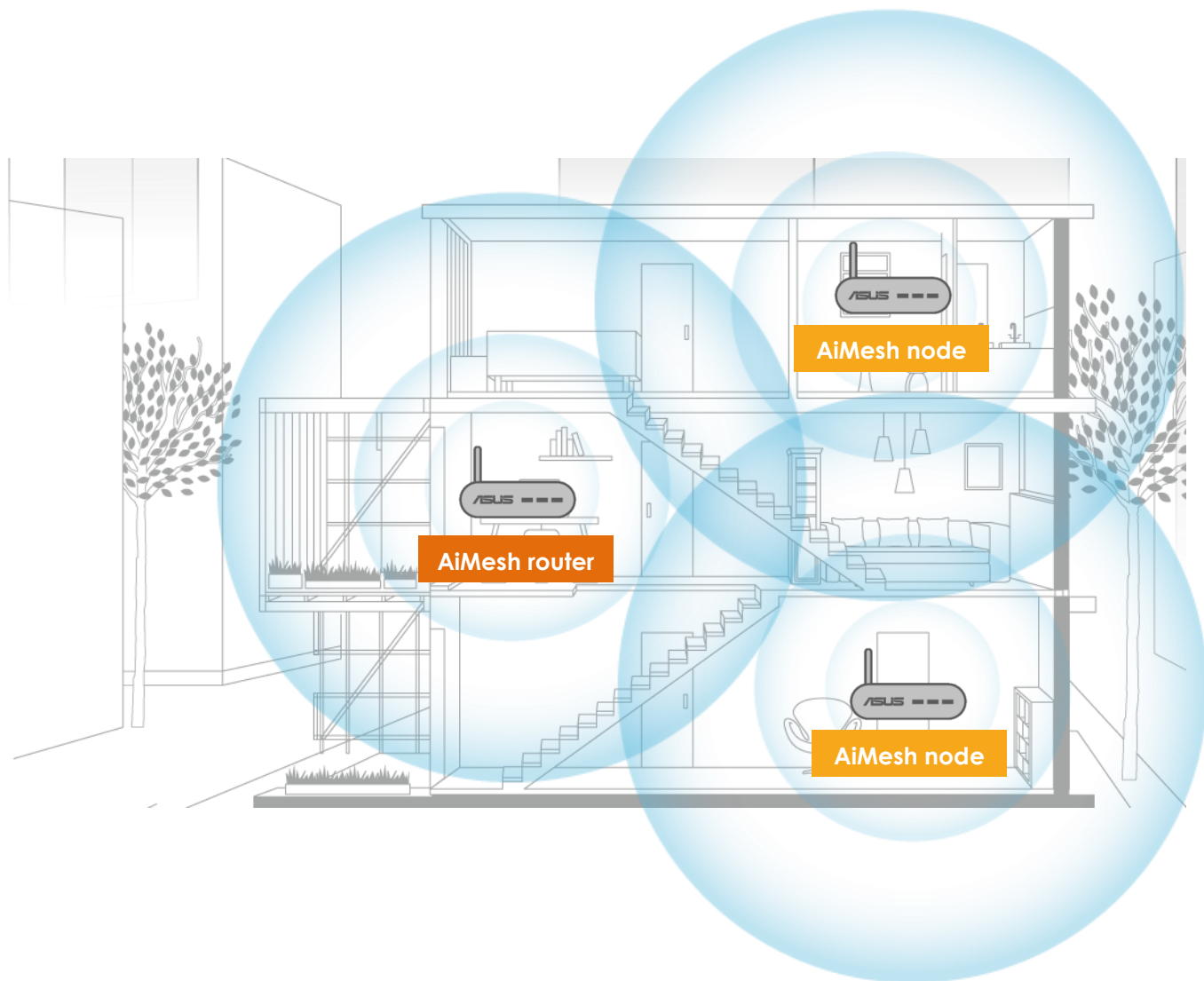
Put AiMesh router and node aim high and in open space.

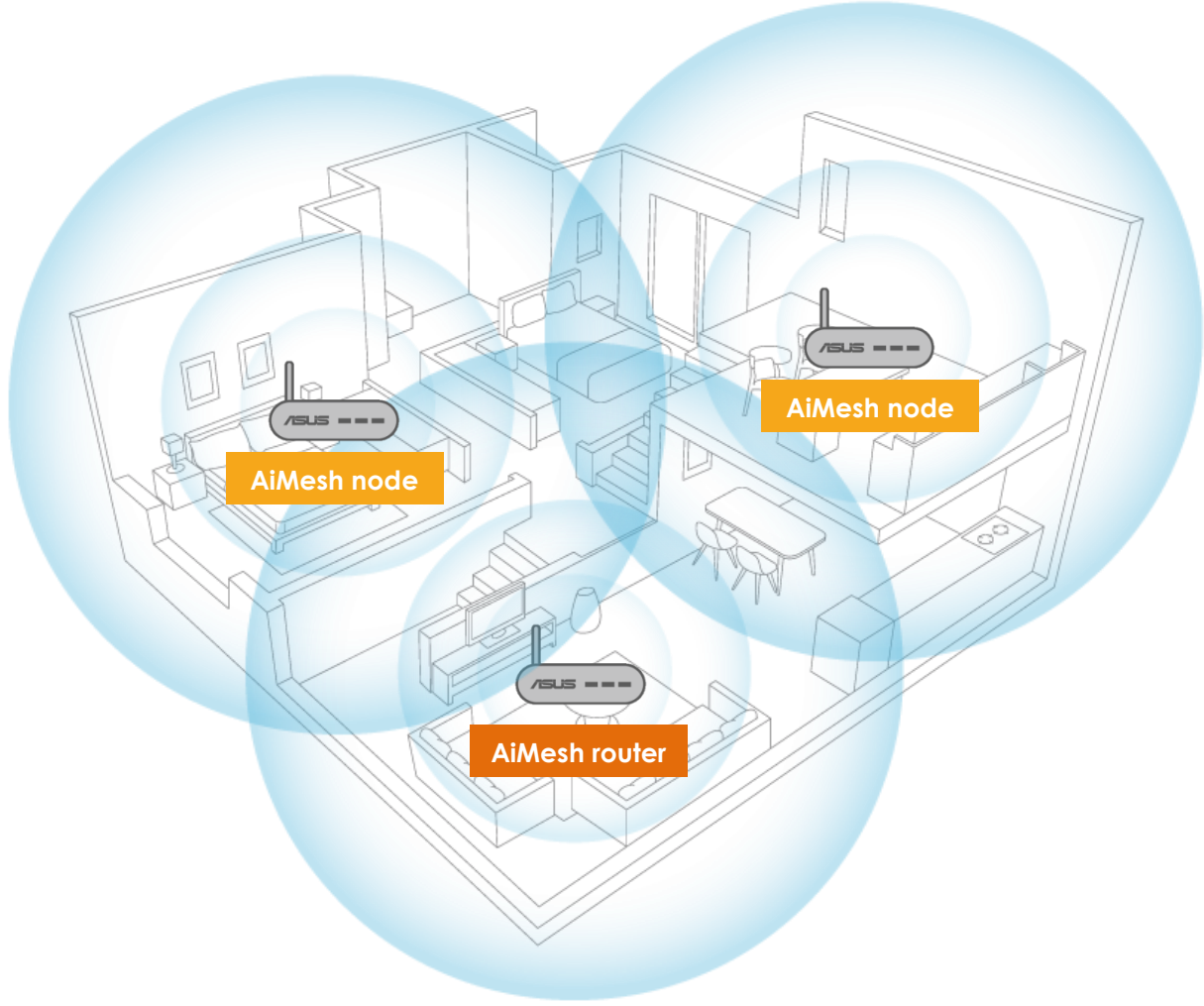
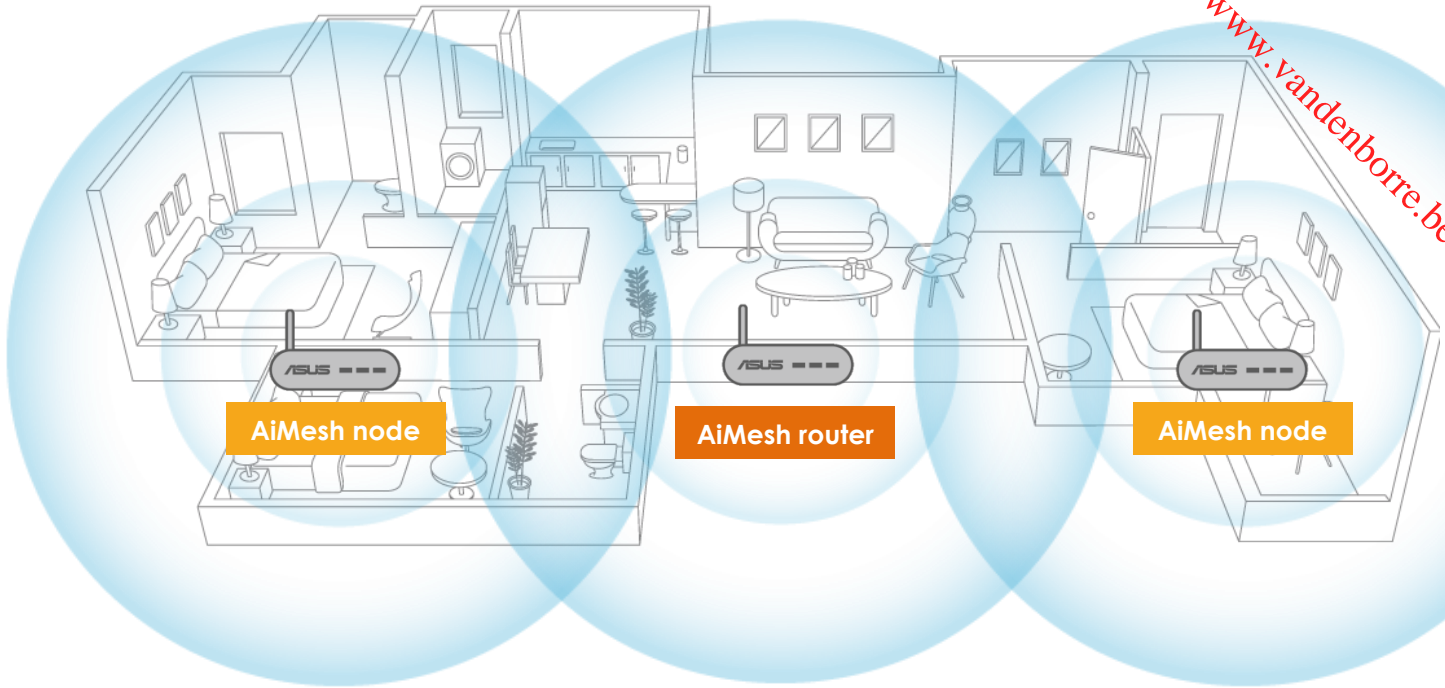
7. Now it's time to move your AiMesh node to a preferable location. You can monitor how many devices are connected to the AiMesh node, and how good the reception is from the AiMesh router. You can access the information using the ASUS Router App or web GUI (<http://router.asus.com>).
1. You can add up to 2 nodes to your AiMesh system under daisy chain topology, and up to 4 nodes when mix daisy chain and star topology. Overall, you can have up to 5 in an AiMesh system. (1 AiMesh router + 4 AiMesh nodes)

2. Strongly recommend you to put the AiMesh node **BETWEEN** your AiMesh router and your existing dead zone.



3. Put **AiMesh router** in the center of the house. We recommend various location placement examples.





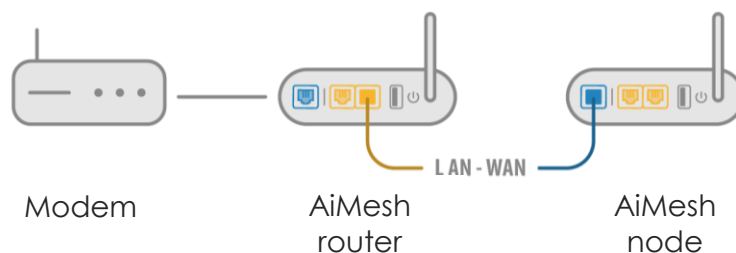
## Ethernet backhaul

### Wired connection between AiMesh router and node

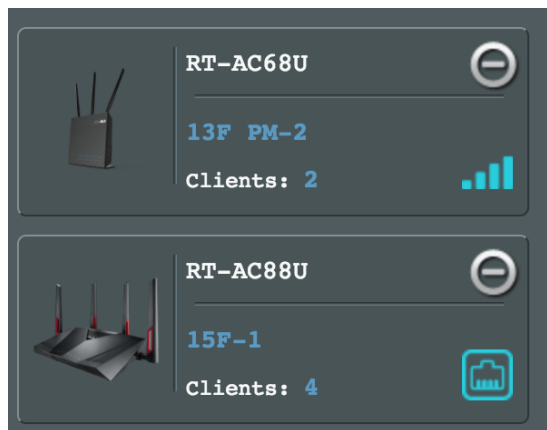
AiMesh system supports both wireless and wired connection between AiMesh router and node to maximize throughput and stability. AiMesh analyzes the wireless signal strength for each frequency band available, and then determines automatically whether a wireless or wired connection is best to serve as the inter-router connection backbone.

Follow the setup steps to establish a connection between the AiMesh router and node via Wi-Fi first. After that:

1. Place the node in the ideal locations for best coverage. Run Ethernet cables from the **LAN port** of the AiMesh router to the **WAN port** of AiMesh node. AiMesh system will auto-select the best path for data transmission, whether wired or wireless.



2. If you want to keep wired connection manually between AiMesh router and node, launch web GUI <http://router.asus.com>, and go to **Network Map**. Click on **AiMesh icon**, you will find the node list at the right side. And then click on the **node picture** → **More Config** → **Connection Priority** → **Ethernet**.





## Feedback

If you have encountered any problem or issue when set up or use ASUS AiMesh, please go to web GUI (<http://router.asus.com>), and go to page **Administration** → **Feedback**.

1. Fulfill the feedback form.
2. Enable system diagnostic and check all capturing logs.
3. Send the feedback form, and ASUS will reply you as soon as possible.

The screenshot shows the ASUS RT-AC86U web GUI. At the top, there are buttons for 'Logout' and 'Reboot', and a language dropdown set to 'English'. The main header displays 'ASUS RT-AC86U' and 'Operation Mode: Wireless router'. Below this, there are tabs for 'Operation Mode', 'System', 'Firmware Upgrade', 'Restore/Save/Upload Setting', and 'Feedback'. The 'Feedback' tab is active, showing the 'Administration - Feedback' page. The page contains a form with the following fields:

- Your Country \*: Taiwan
- Your e-mail Address \*: monkey\_kang@asus.com
- Extra information for debugging \*:  System Log  Setting file  3G/4G log
- Enable System Diagnostic \*:  Yes  No \* No USB disk plug-in.
- Currently Capturing Logs:  All  Wi-Fi  AiMesh
- Diagnostic debug log capture duration: 6 hours
- Feedback problem type: Please select ...
- Feedback problem description: Others
- Comments / Suggestions \*: A text area with a character count of 2000.

At the bottom of the form, there is a 'Send' button and a 'Note' section with the following text:

**Note:**

- The Firmware Version will be submitted in addition to any info you choose to include above.
- Feedback will be used to diagnose problems and help to improve the firmware of RT-AC86U, any personal information you submitted, whether explicitly or incidentally will be protected in accordance with our [privacy policy](#).
- By submitting this Feedback, you agree that ASUS may use feedback that you provided to improve ASUS Networking & Wireless product.
- If you have any urgent matter, please ask local technical support.